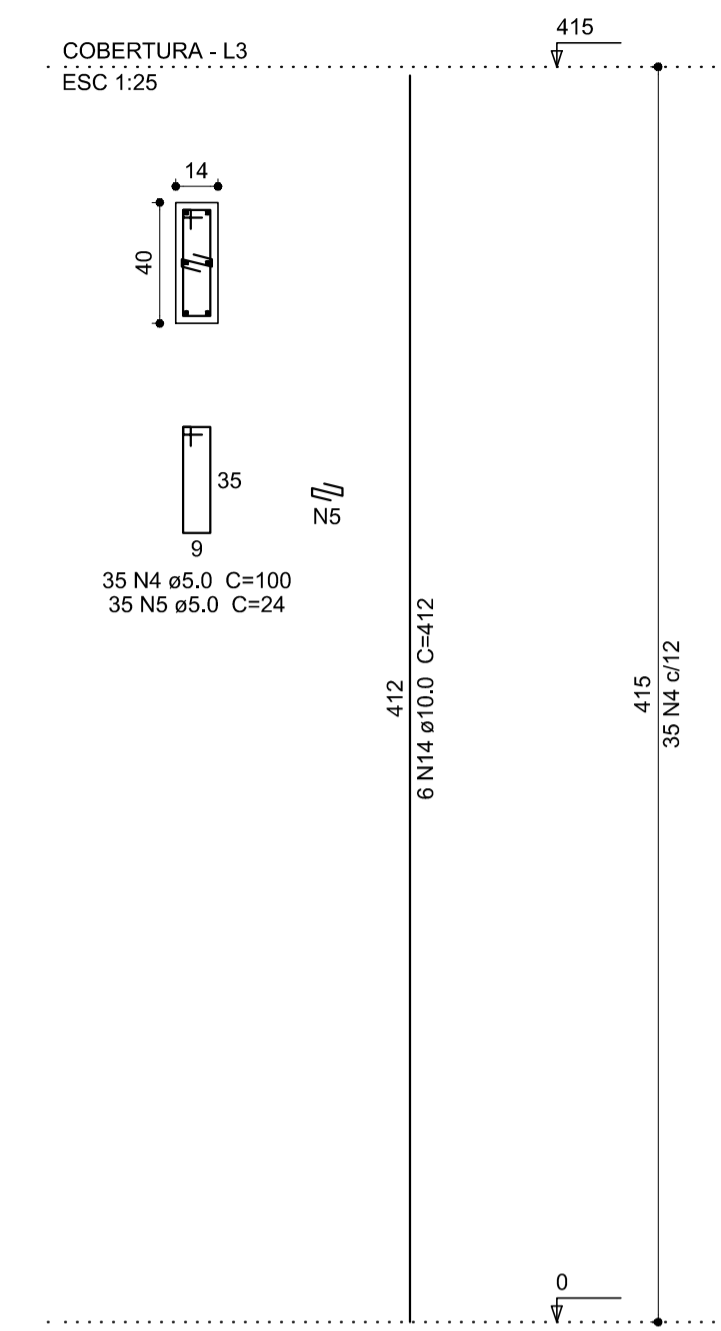
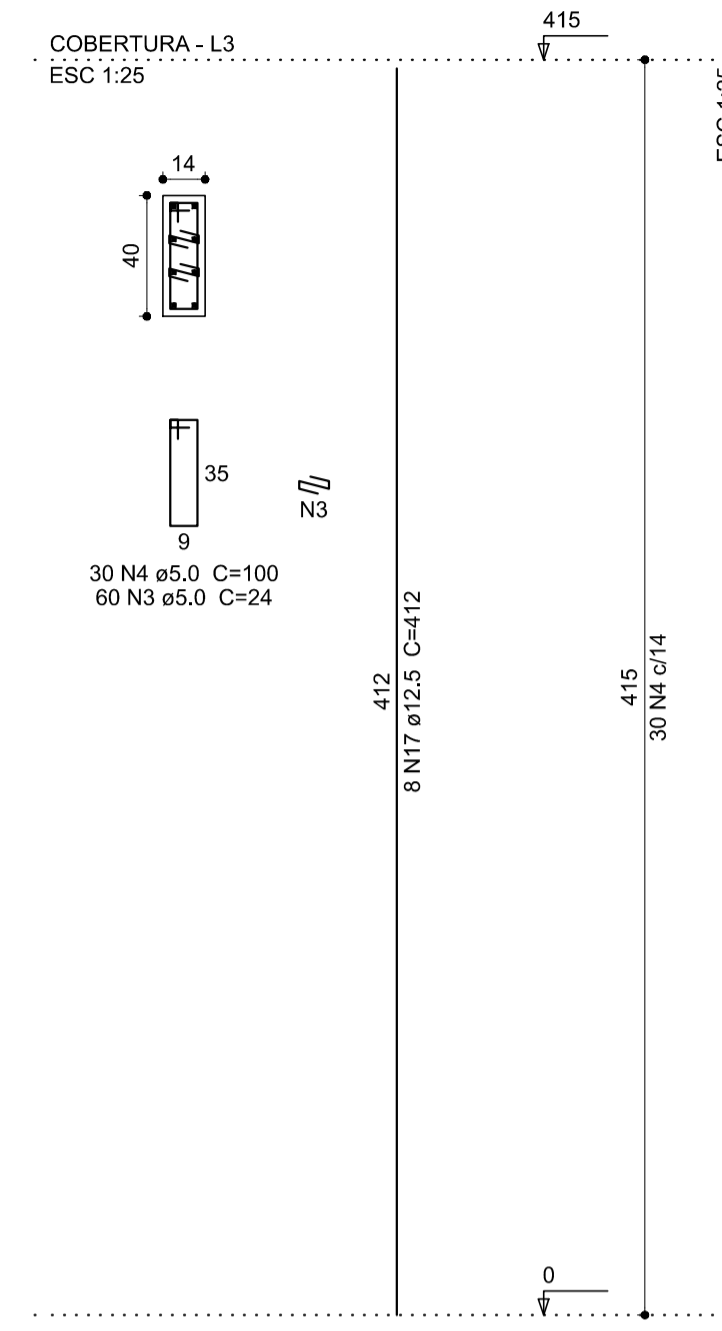


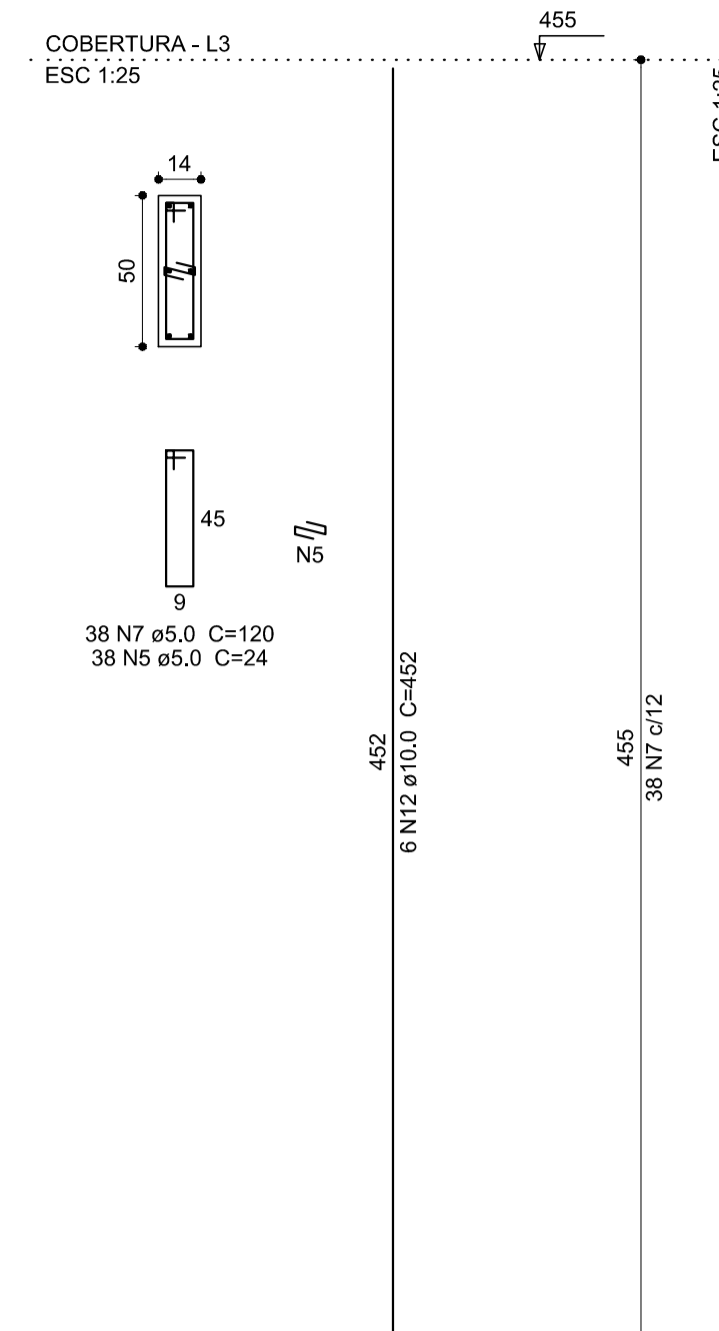
P.10=P.61=P.62



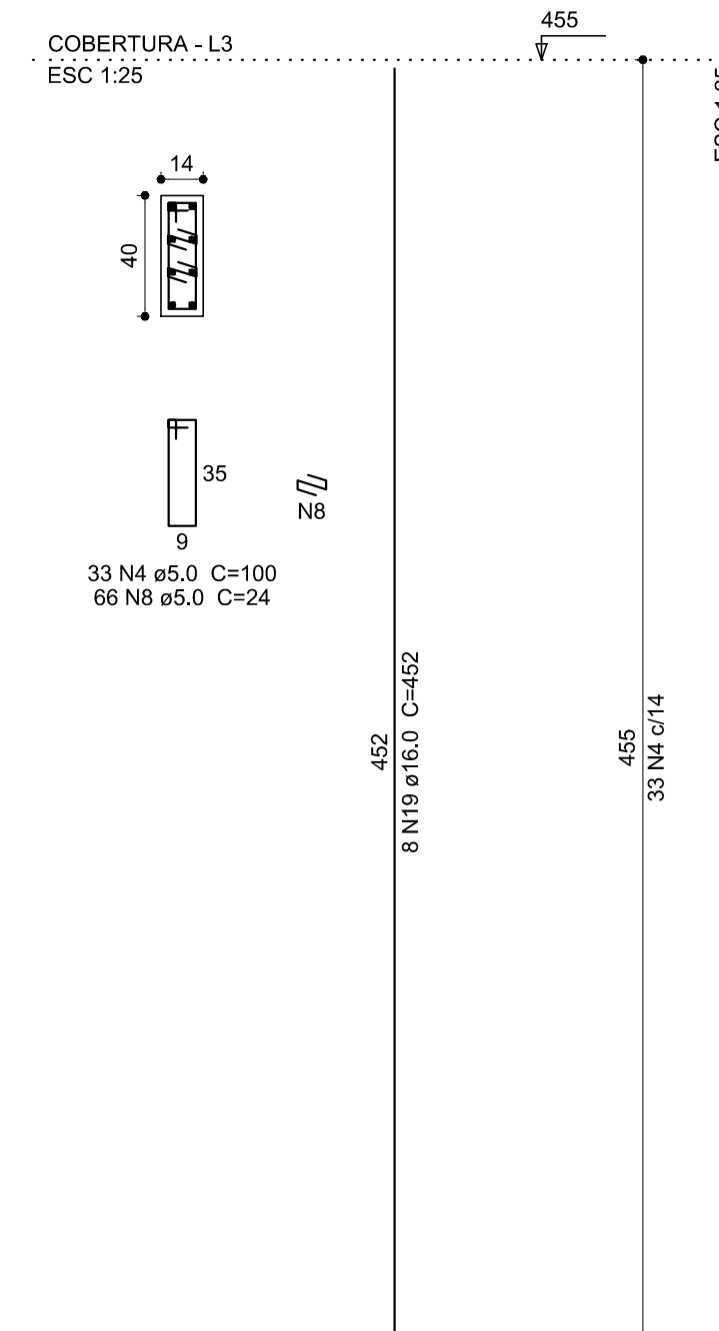
P.11=P.12



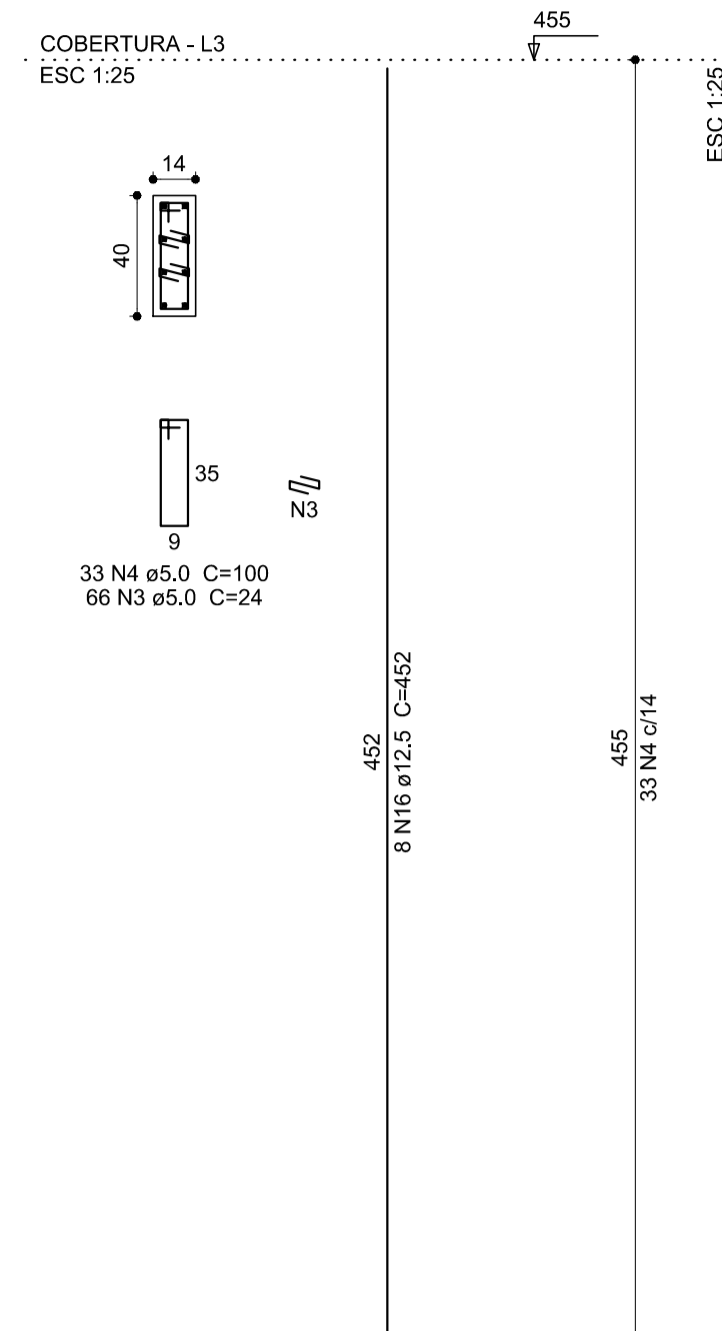
P.14=P.15



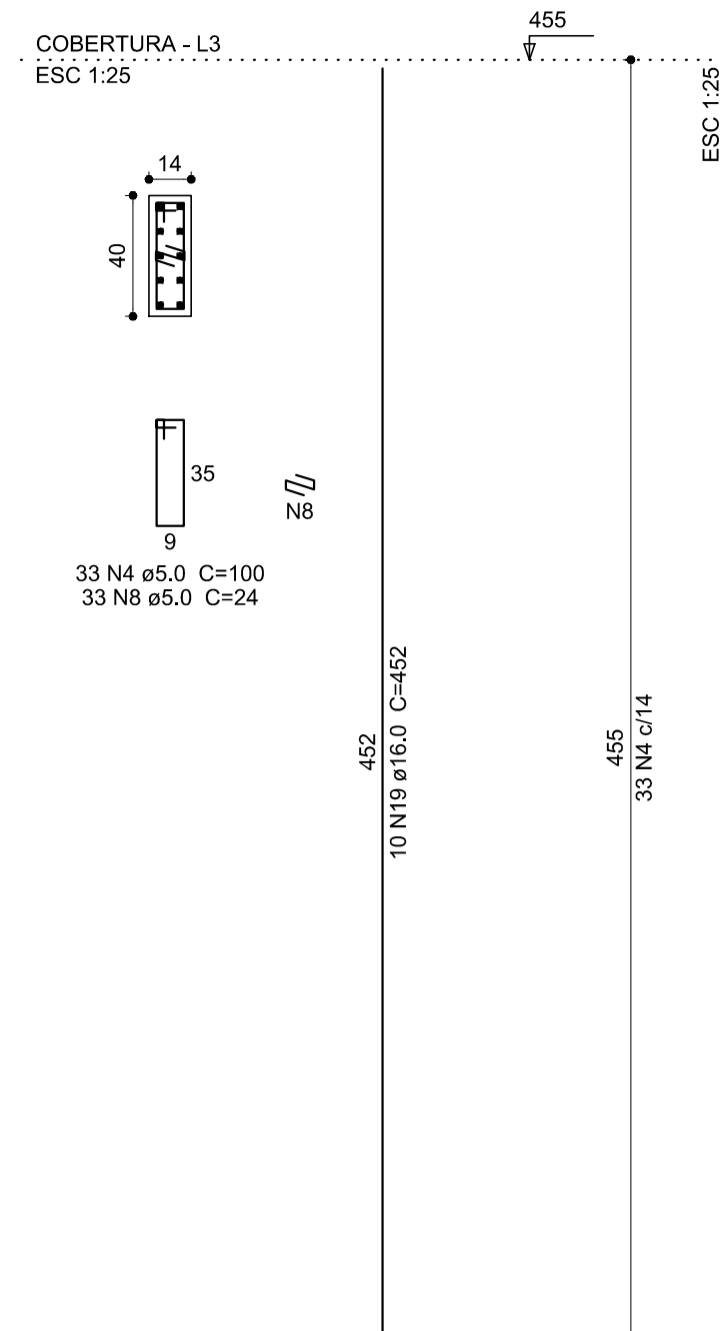
P.20=P.40



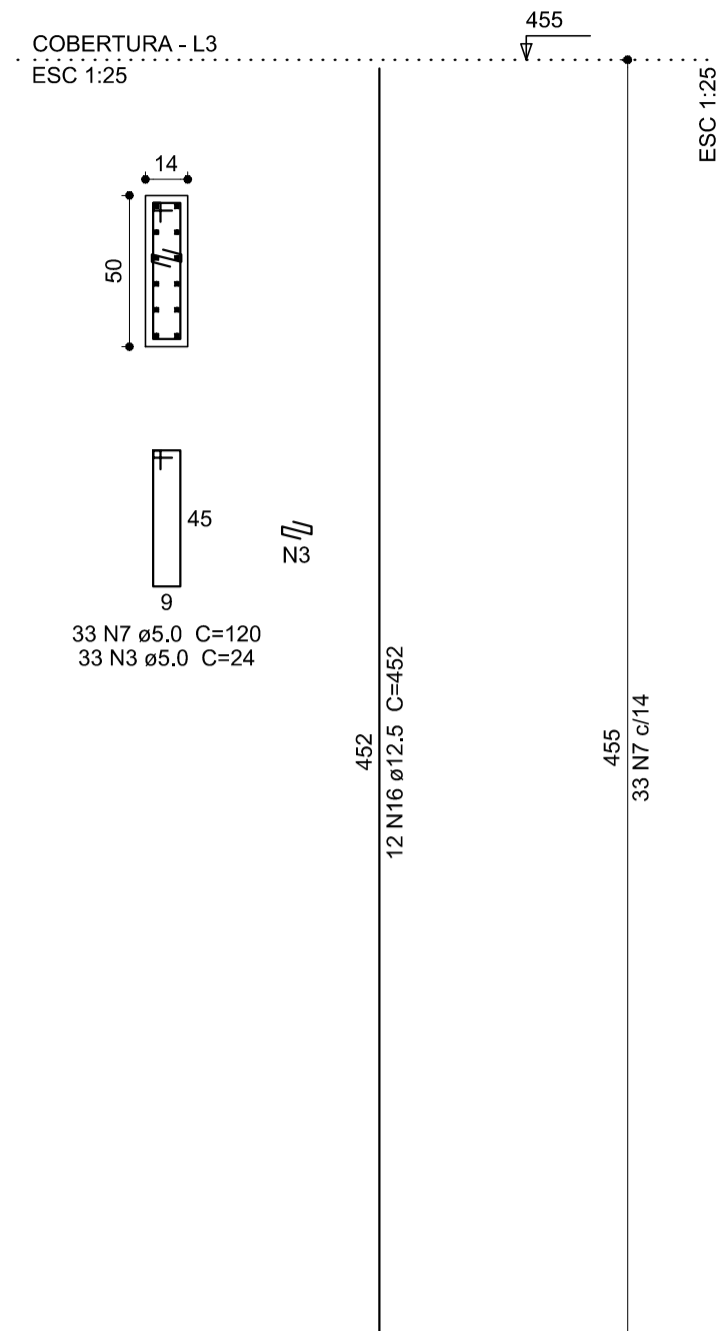
P.21=P.29=P.33=P.34=P.38=P.42=P.55



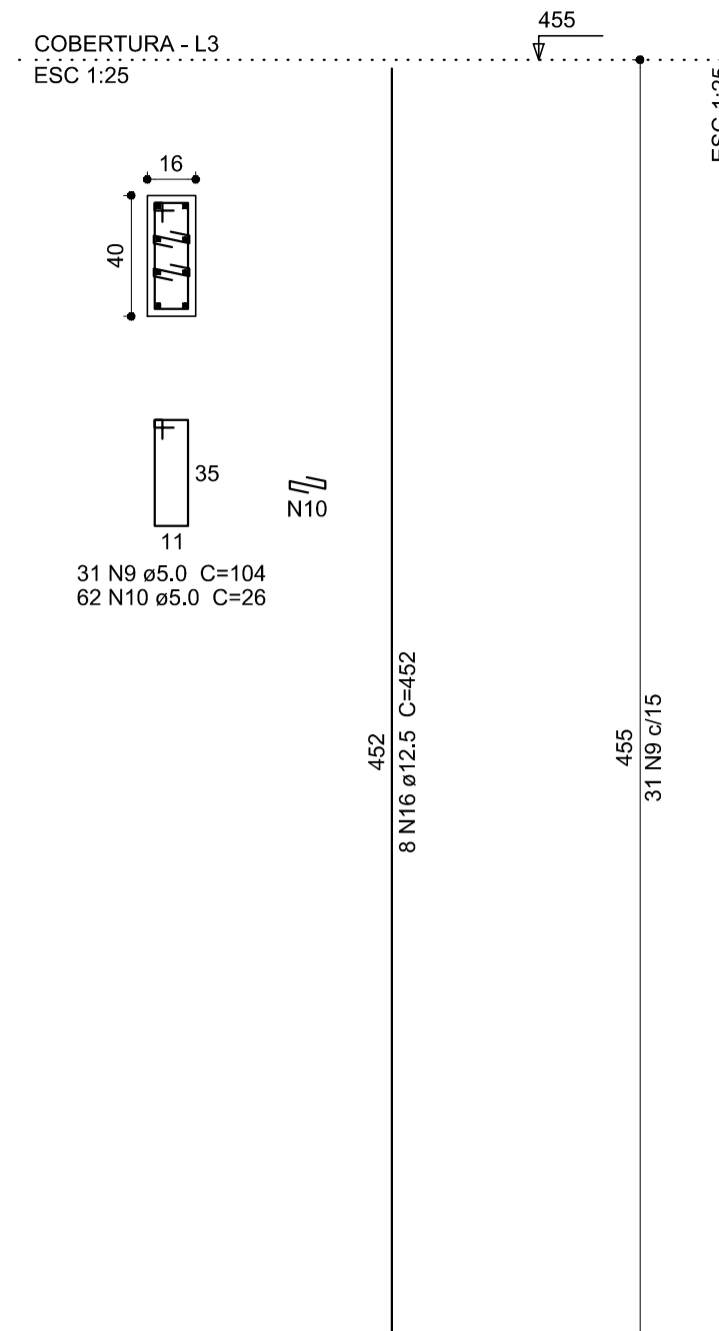
P.22=P.32=P.37



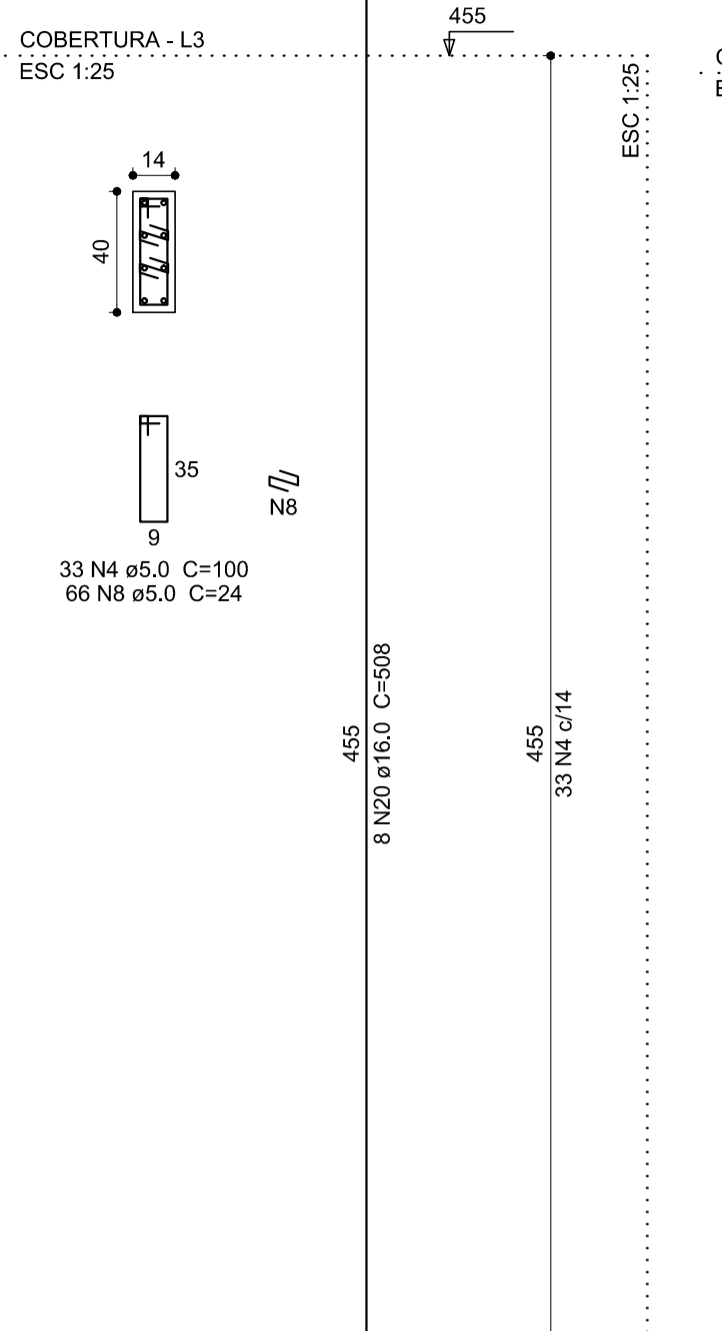
P.23=P.43



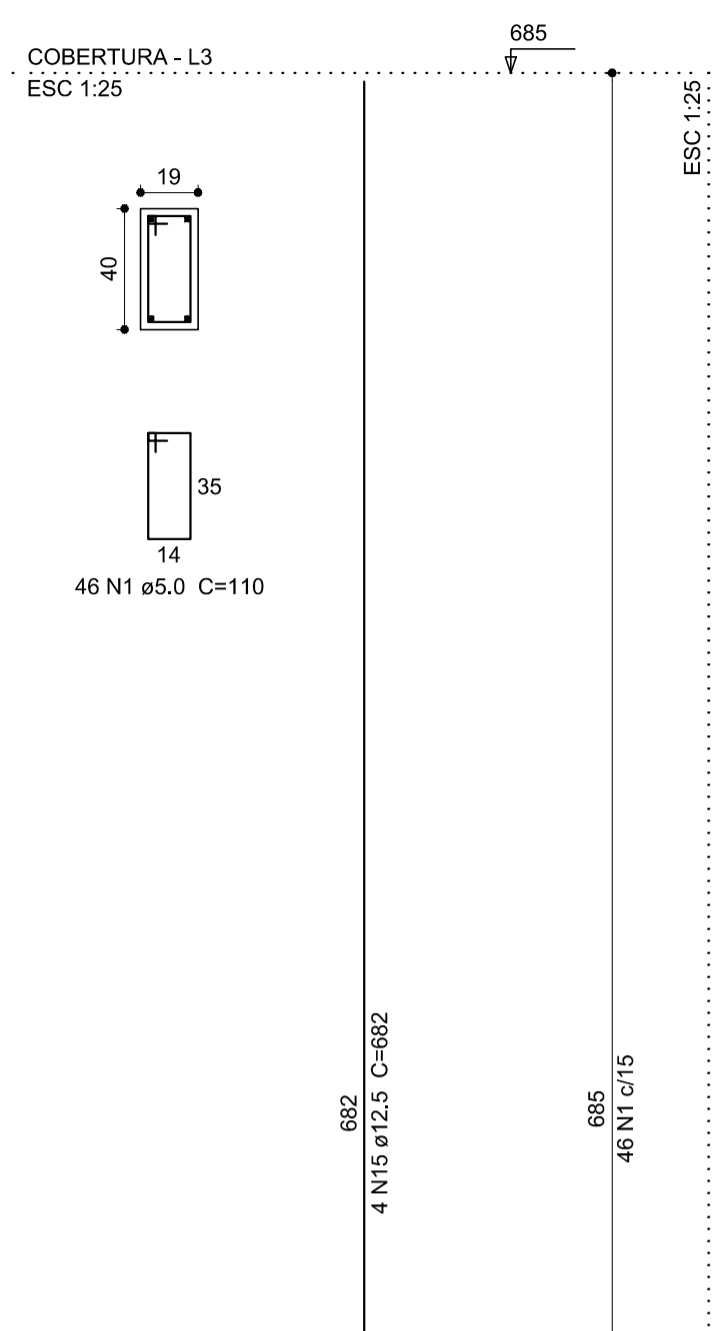
P.24



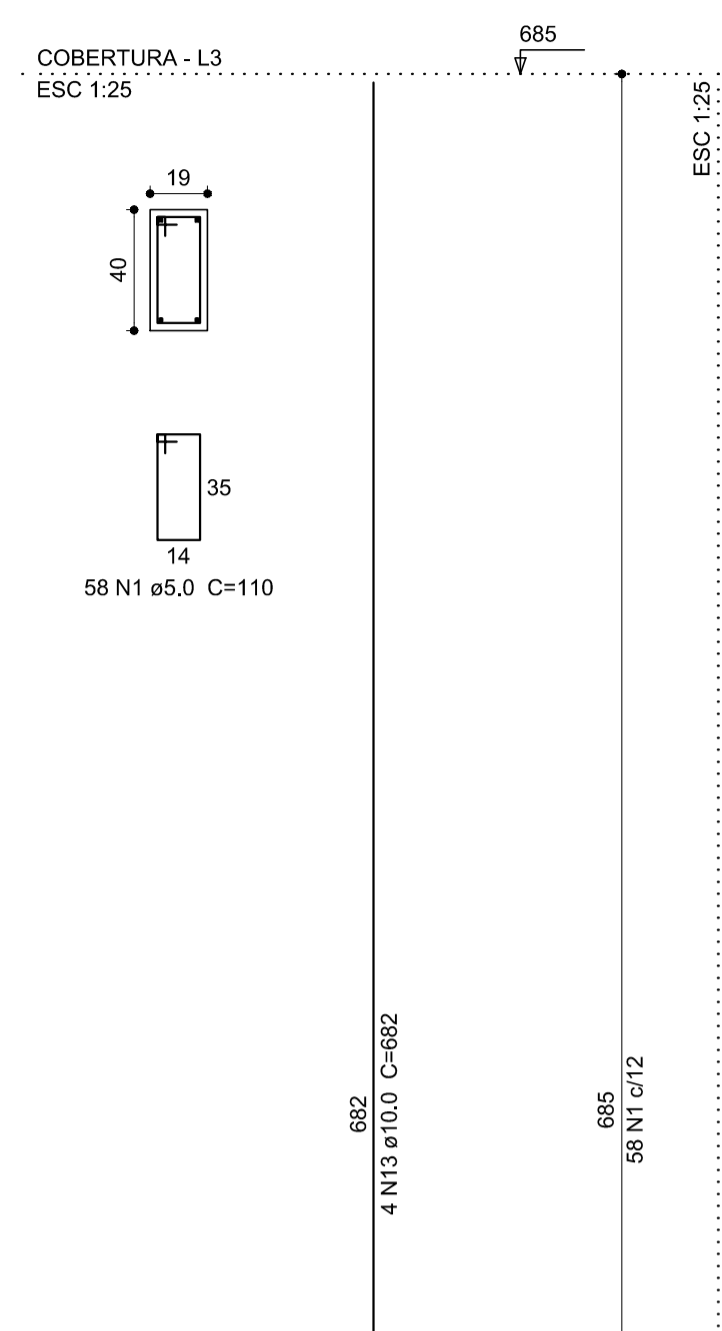
P.30



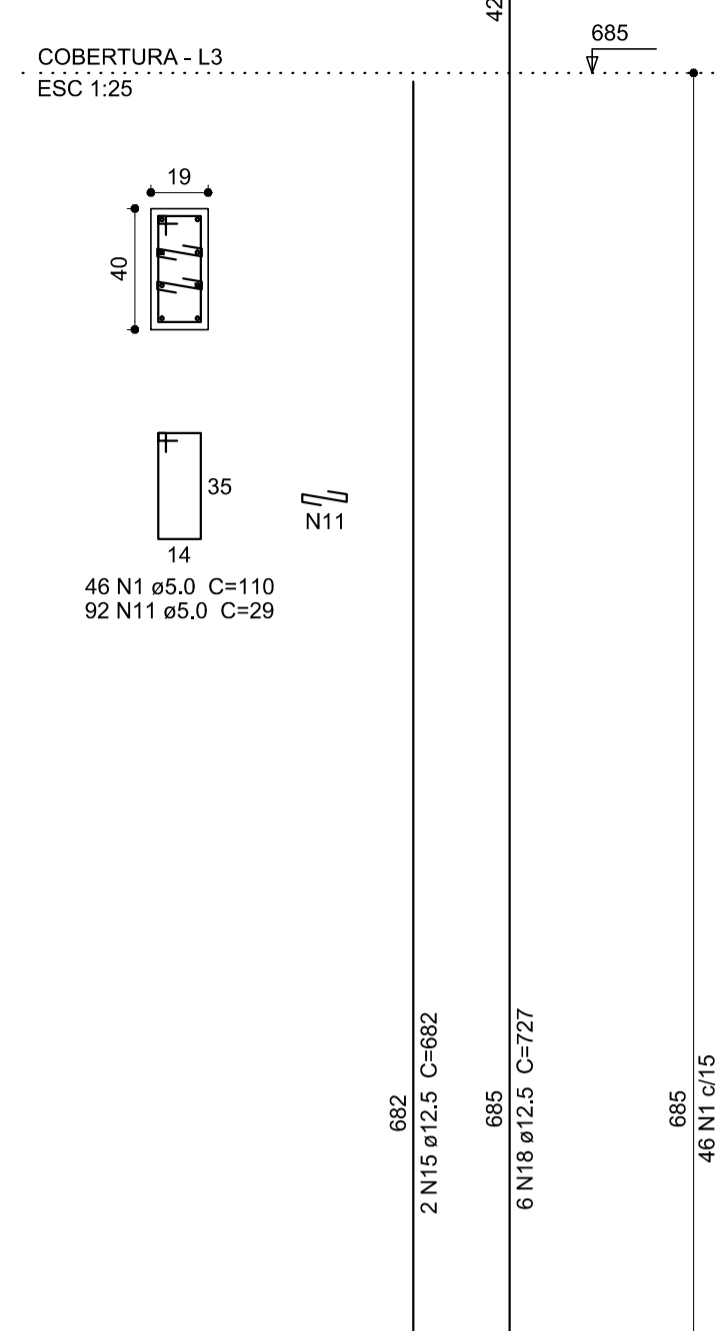
P.1=P.65



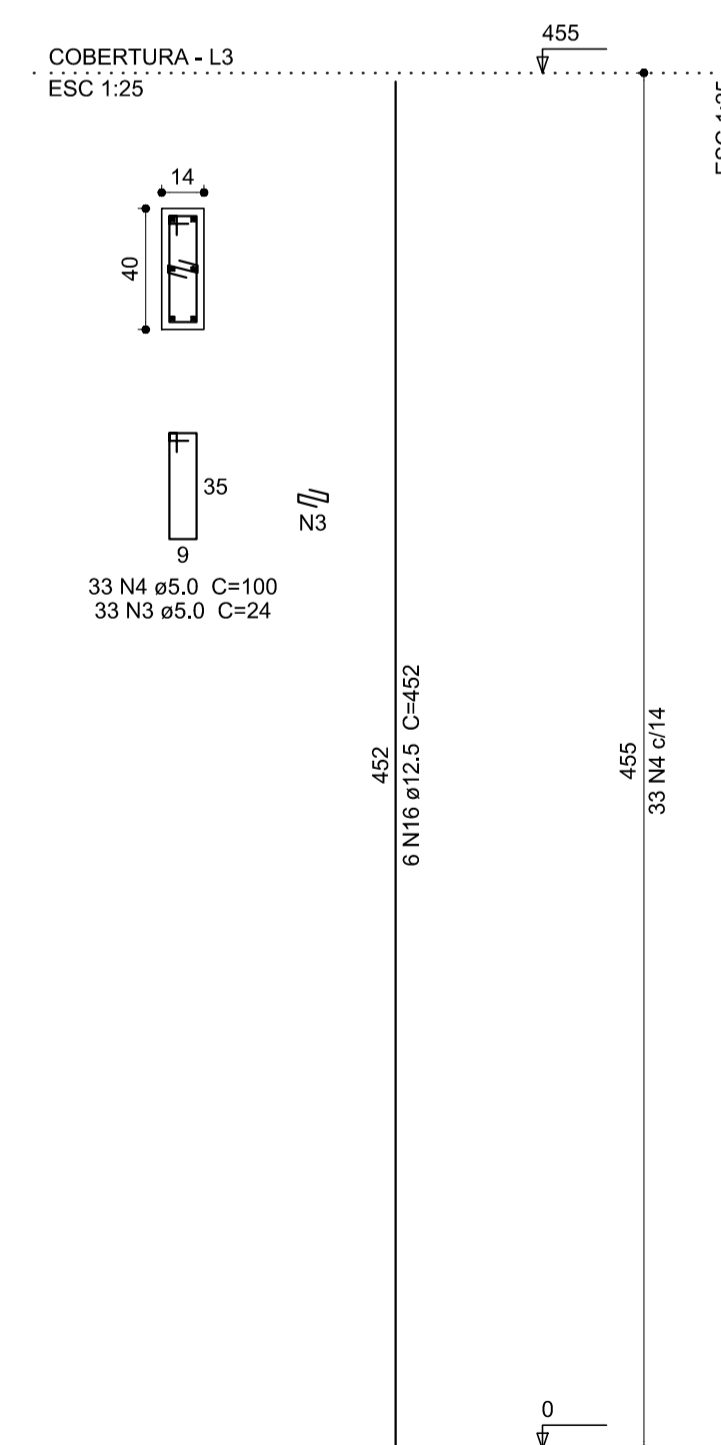
P.9=P.19=P.49=P.59



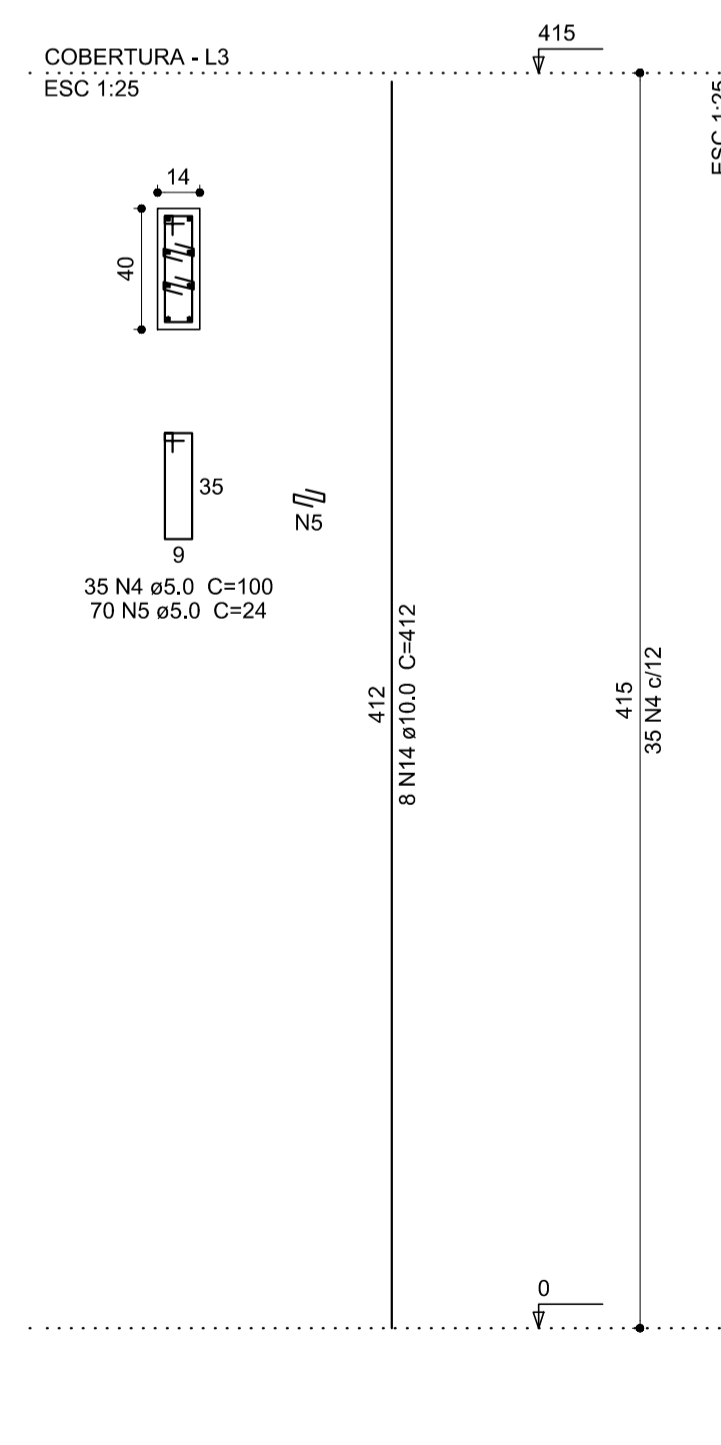
P.31=P.36



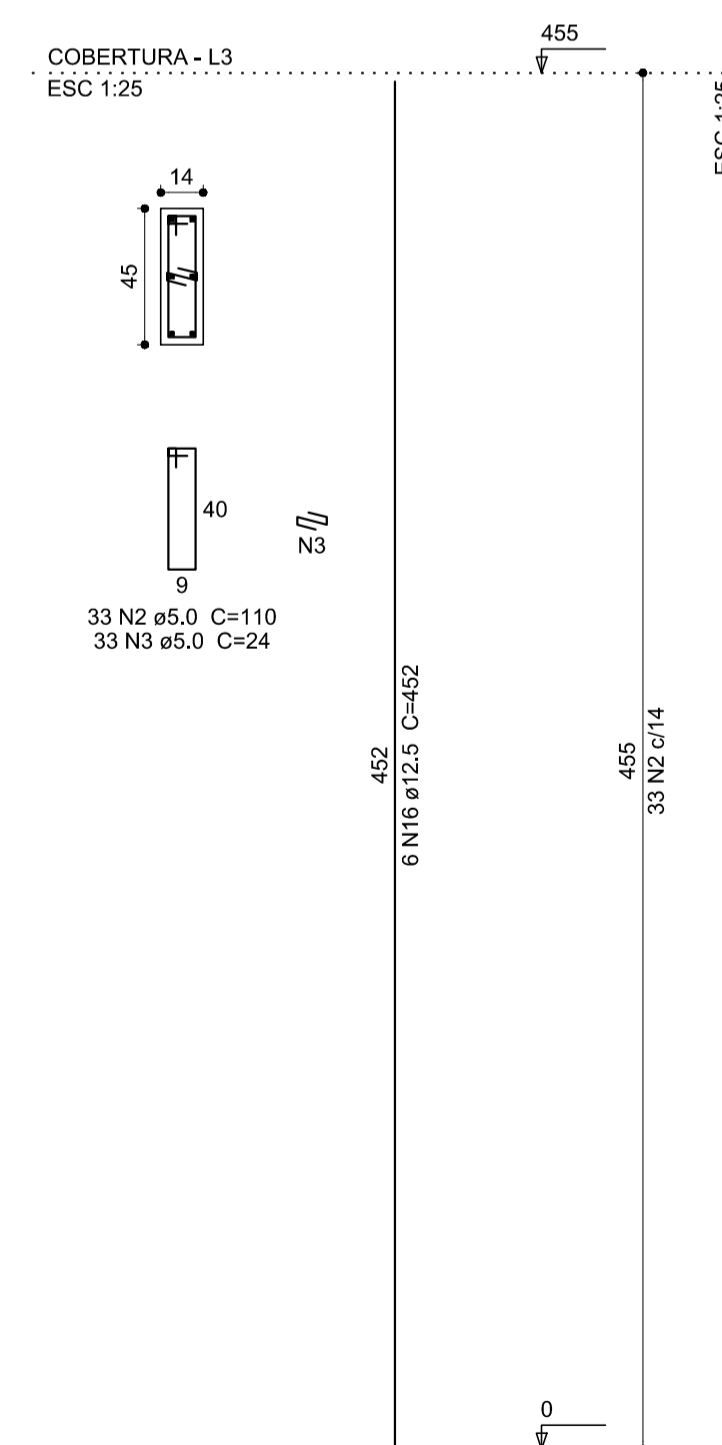
P.44=P.53



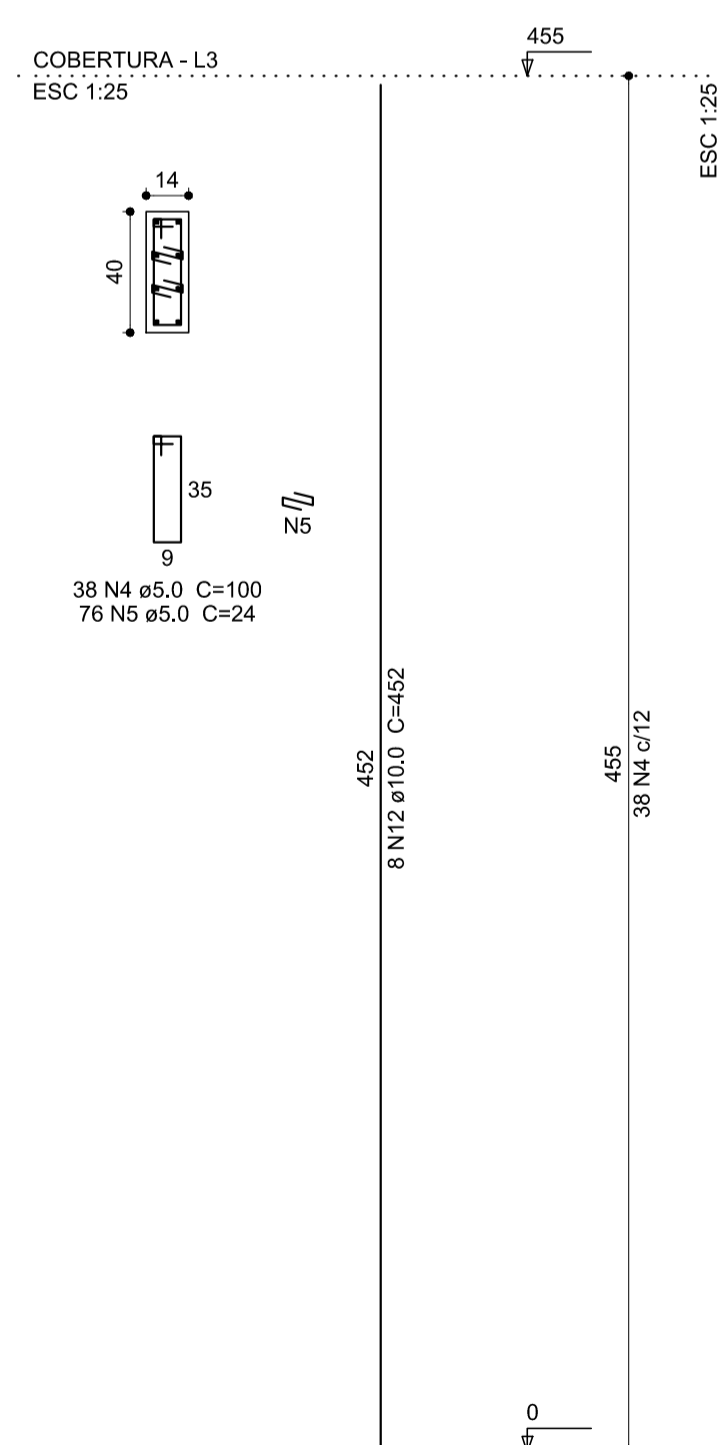
P.60=P.63



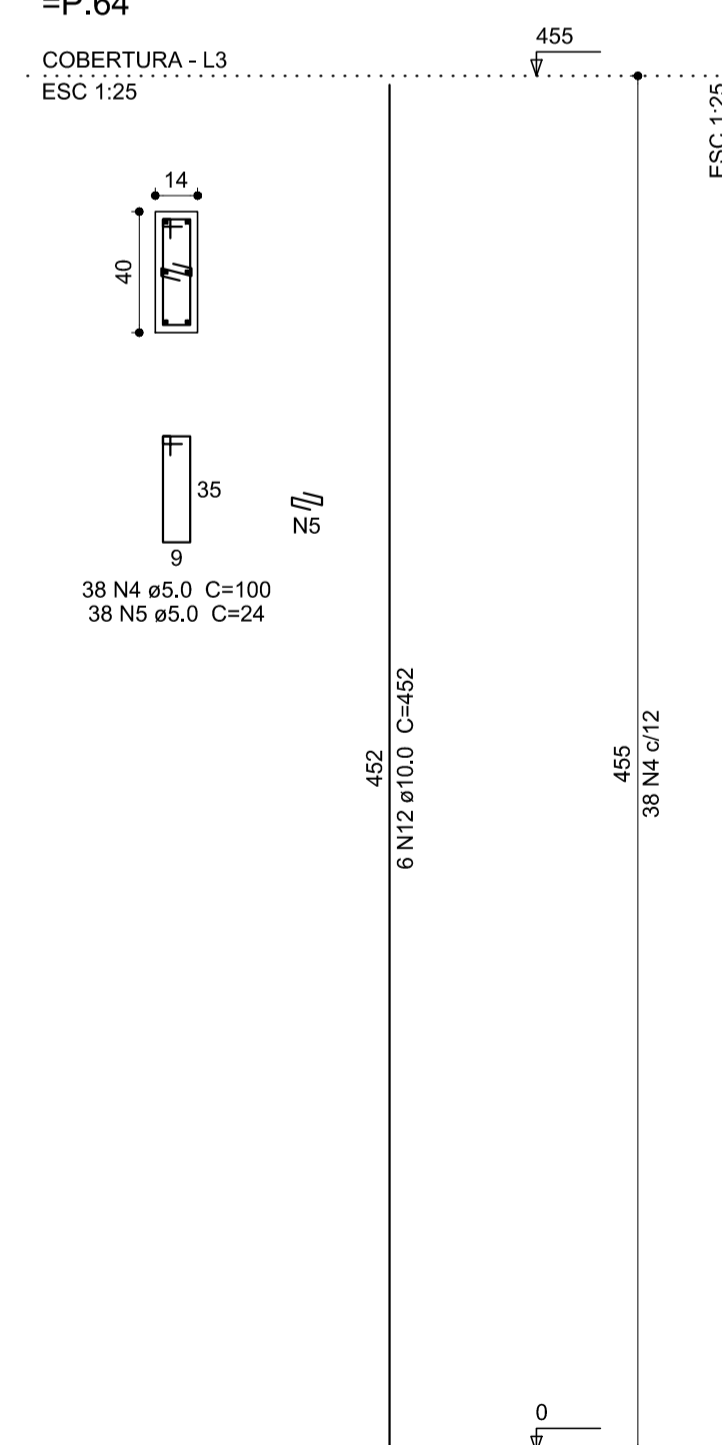
P.2



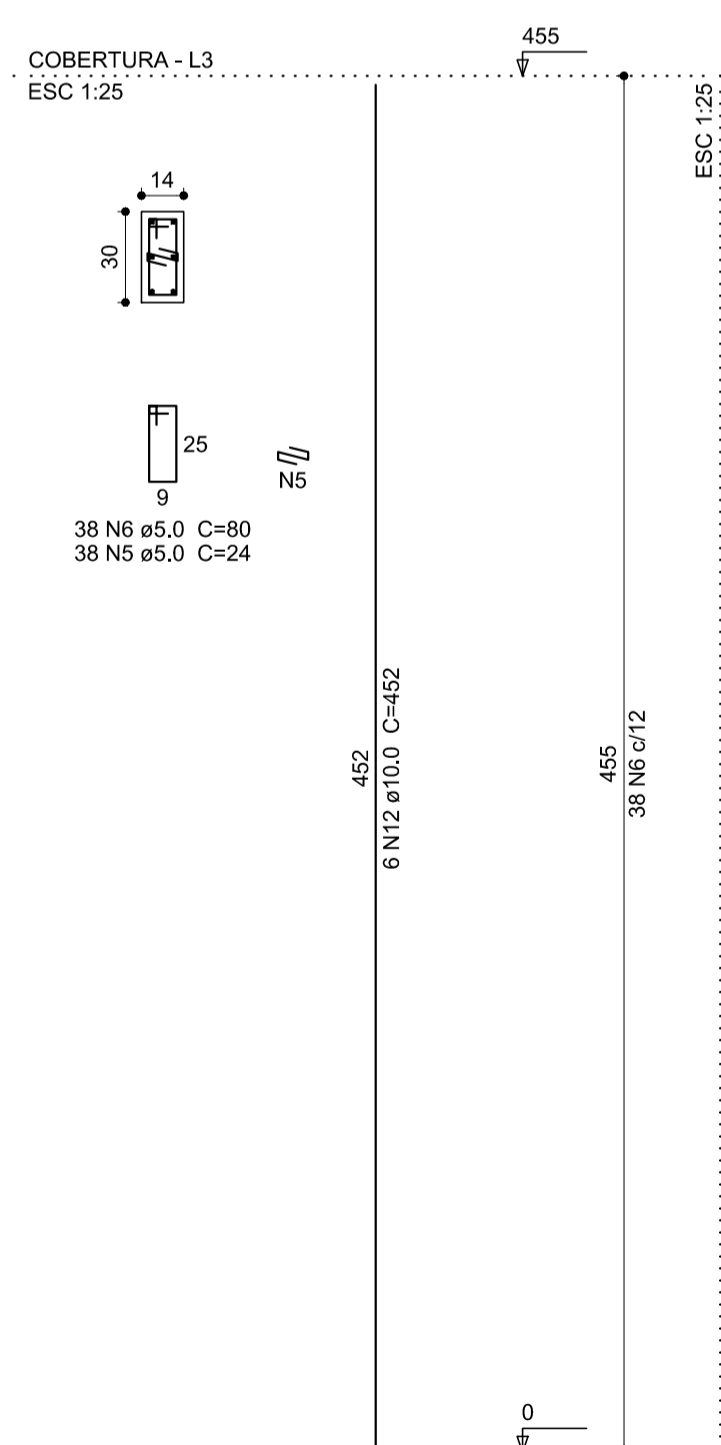
P.3=P.8=P.25=P.26=P.41=P.56=P.57



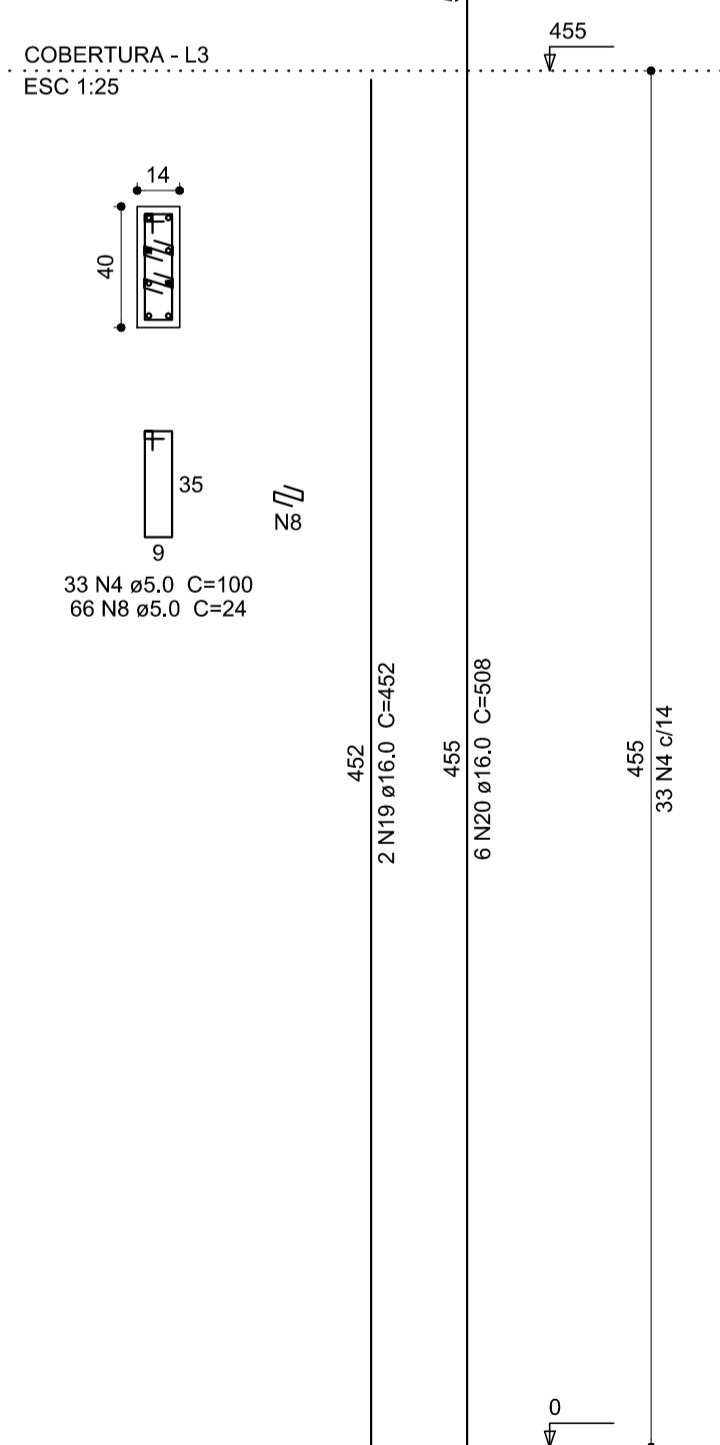
P.4=P.7=P.13=P.16=P.17=P.18=P.39=P.45
=P.46=P.47=P.48=P.50=P.51=P.52=P.54=P.58
=P.64



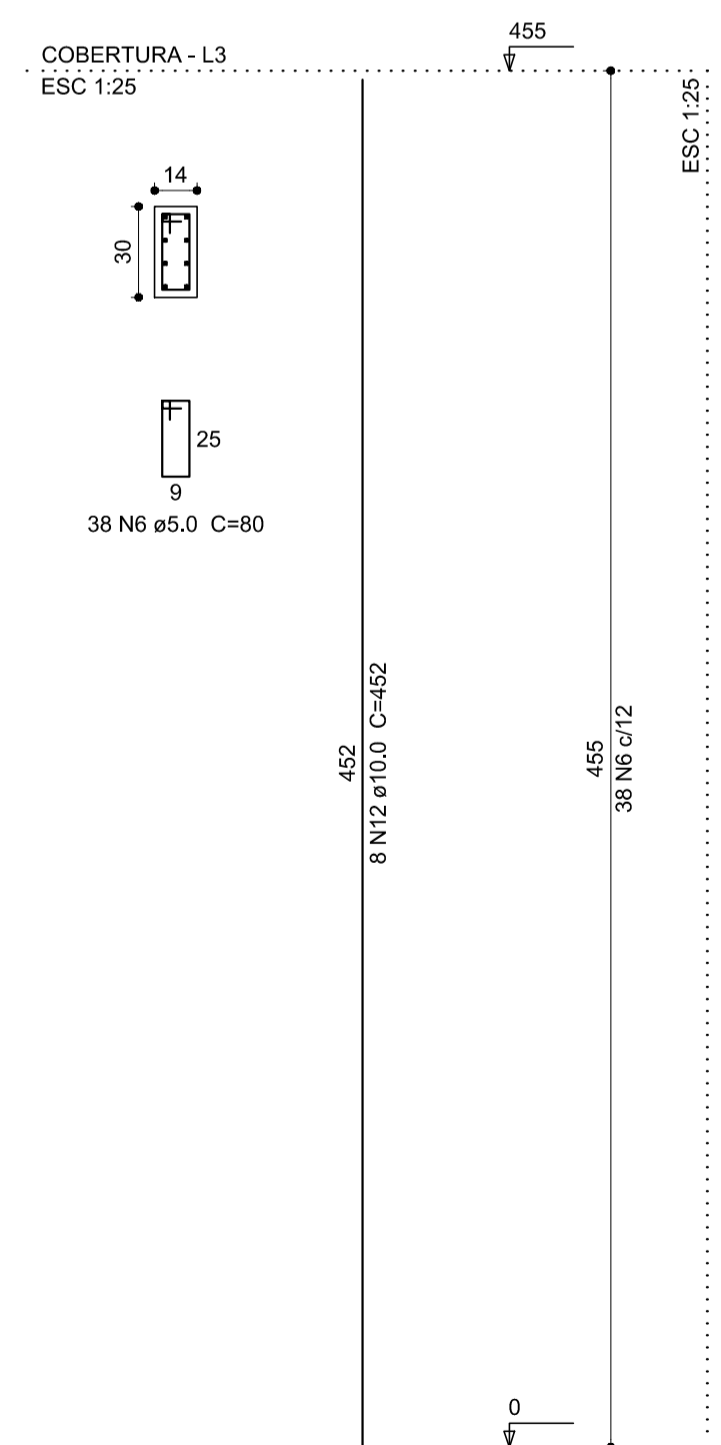
P.5=P.6



P.35



P.27=P.28



Relação do aço

ACO	N	DIAM (mm)	QUANT (Barras)	UNIT (cm)	C.TOTAL (cm)
CA80	1	5.0	416	110	45760
CA80	2	5.0	33	110	3630
CA80	3	5.0	747	24	17928
CA80	4	5.0	1675	100	167500
CA80	5	5.0	1576	24	37800
CA80	6	5.0	152	80	12160
CA80	7	5.0	142	120	17040
CA80	8	5.0	363	24	8712
CA80	9	5.0	31	104	3224
CA80	10	5.0	62	26	1612
CA80	11	5.0	184	29	5336
CA80	12	10.0	198	452	89496
CA80	13	10.0	18	682	10912
CA80	14	10.0	34	412	14008
CA80	15	12.5	12	882	8164
CA80	16	12.5	106	452	47912
CA80	17	12.5	16	412	6592
CA80	18	12.5	12	727	8724
CA80	19	16.0	48	452	21696
CA80	20	16.0	14	508	7112

Resumo do aço

ACO	DIAM (mm)	C.TOTAL (m)	PESO + 10% (kg)
CA50	10.0	1144.2	776
CA50	12.5	714.2	756.7
CA50	16.0	285.1	500.2
CA80	5.0	3207.1	543.7
PESO TOTAL (kg)			
CA50		2032.8	
CA80		543.7	

Volume de concreto (C-30) = 18,6 m³
Área de forma = 342,38 m²

CLIENTE: IFC CAMPUS ARAQUARI
LOCAL: BR 280 KM 27
BAIRRO: ... CIDADE: ARAQUARI - SC

07

DETALHAMENTO DOS PILARES ENTRE PAV. TERREO E COBERTURA

PROJETO ESTRUTURAL

DESSENHO: Cirilo Junior ESCALA: Indicadas DATA: 14/09/2013 DATAULT.MODIF: 08/10/2013

Rua Nazareno, 426 - Bairro Glória - Joinville - SC - Fone 47 3427-6555

Cirilo Jr.
CIRILO DE ALEXANDRIA ALMEIDA JR.
Engenheiro Civil - CREA 094274-8