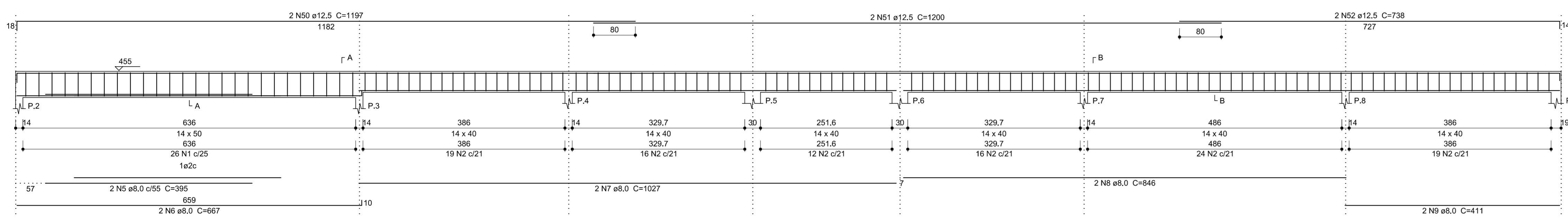
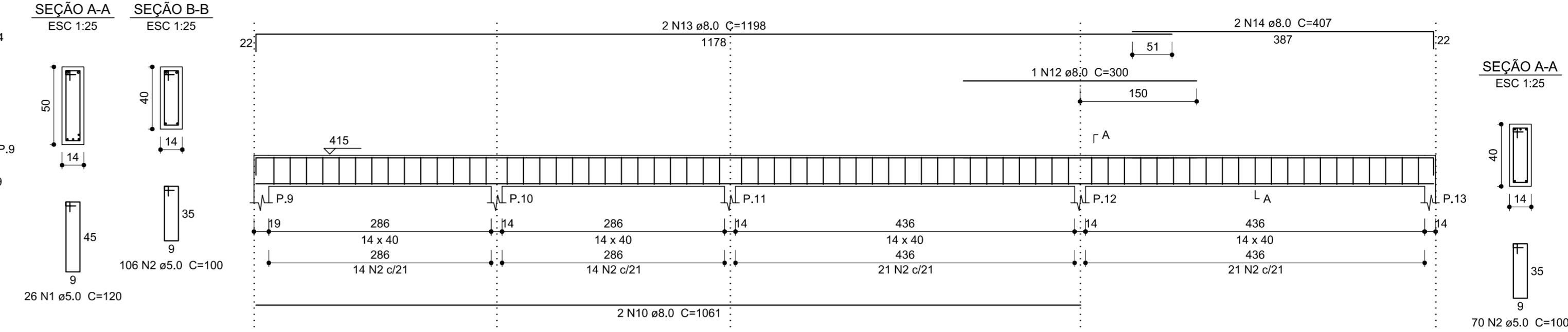


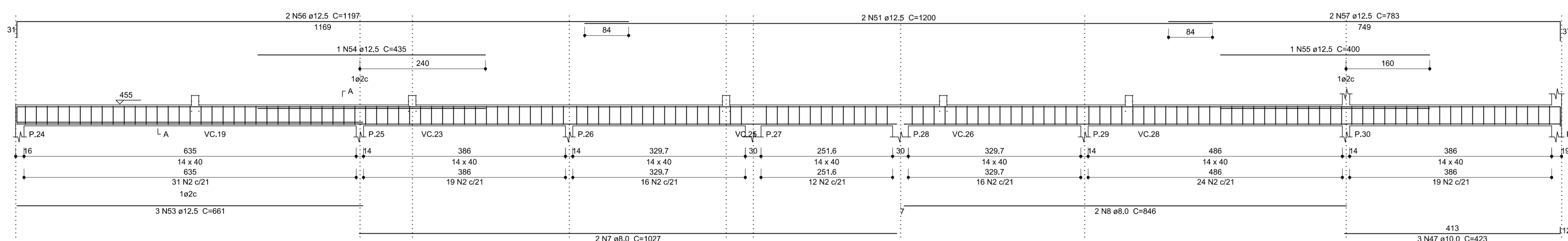
VC.1 (var)



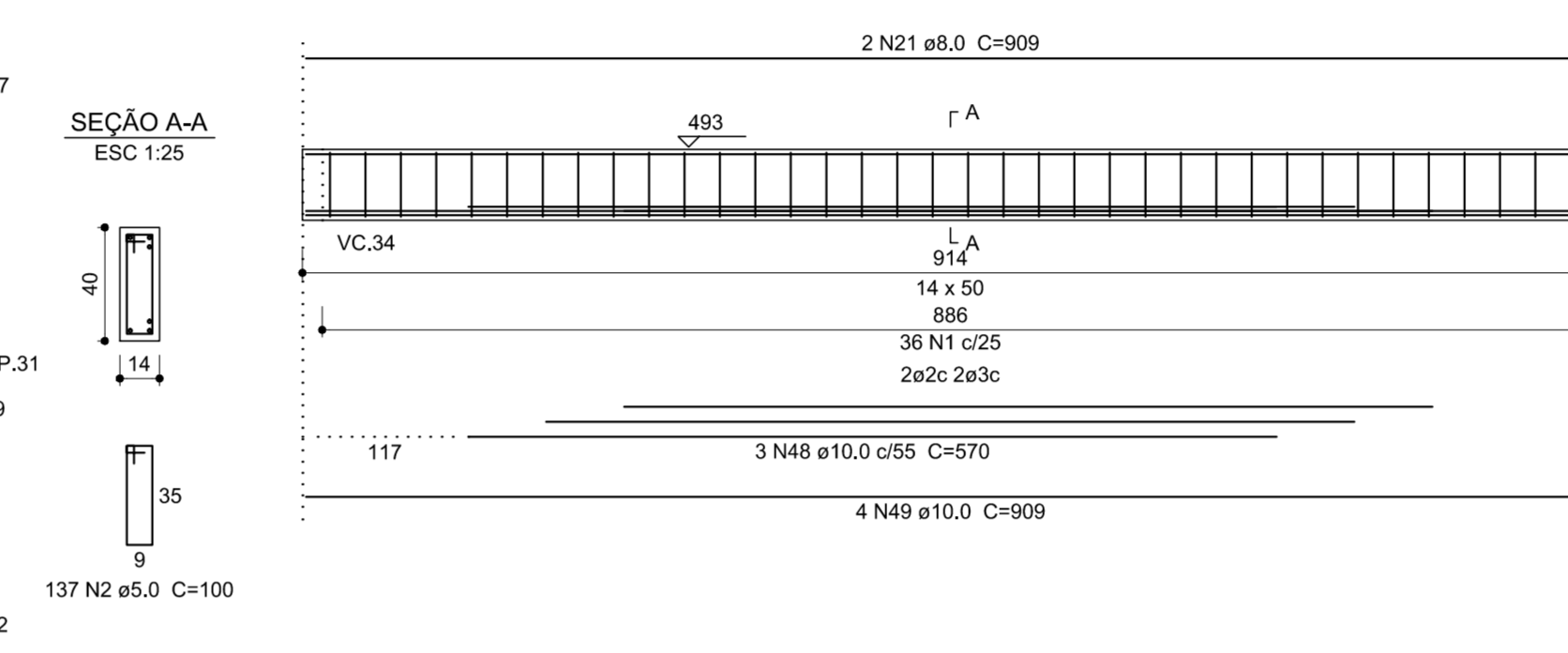
VC.2 (14 x 40)



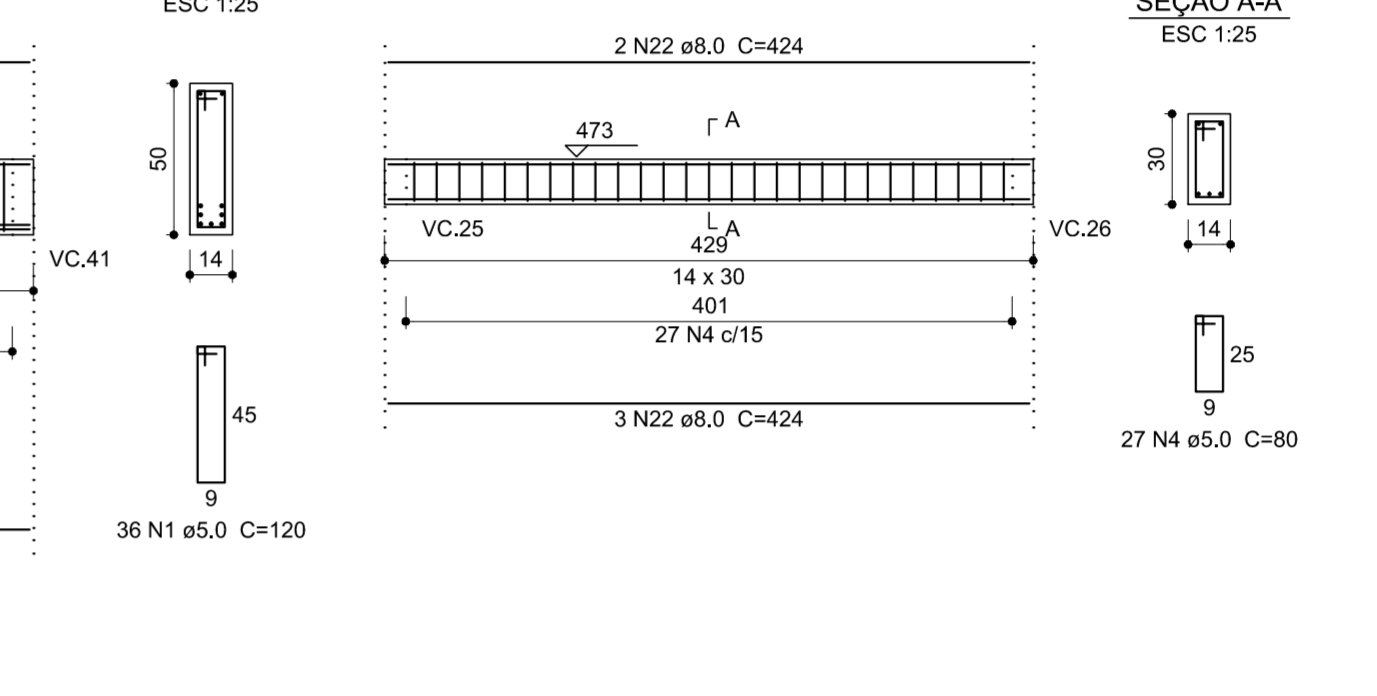
VC.4 (14 x 40)



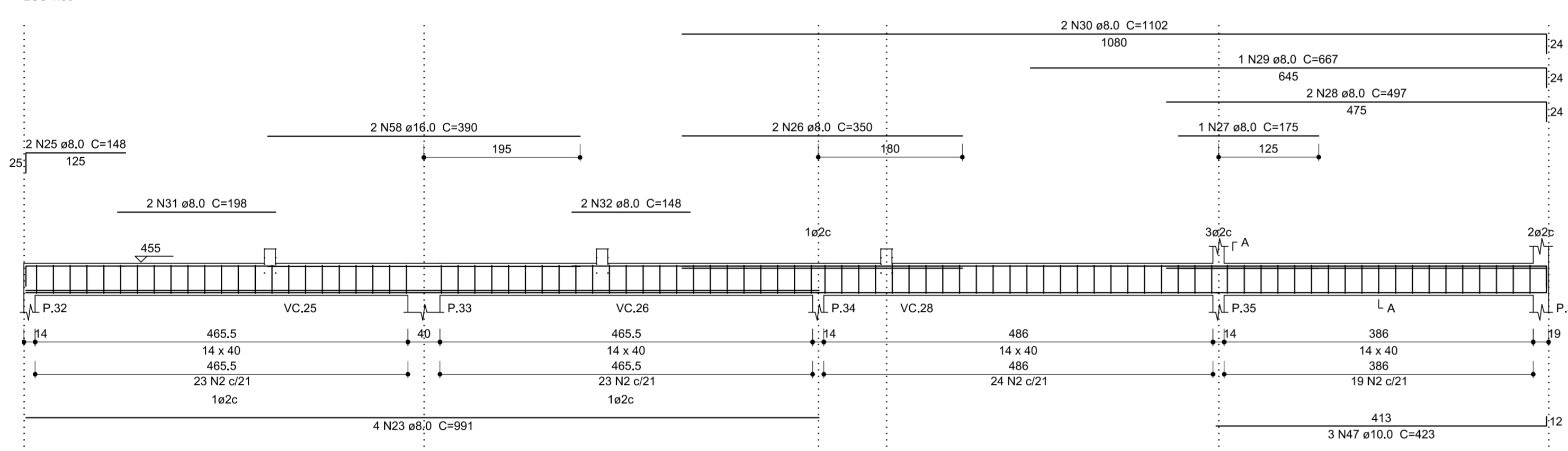
VC.5 (14 x 50)



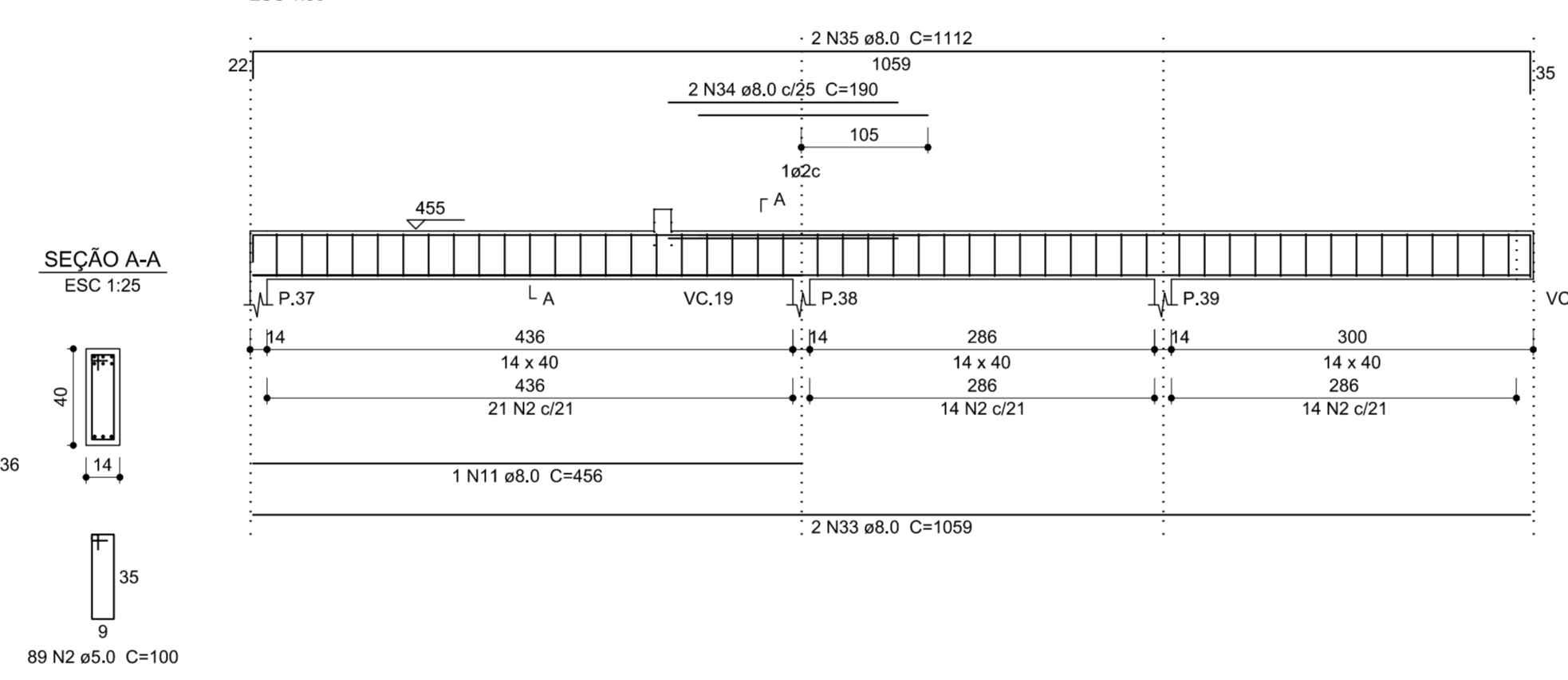
VC.6 (14 x 30)



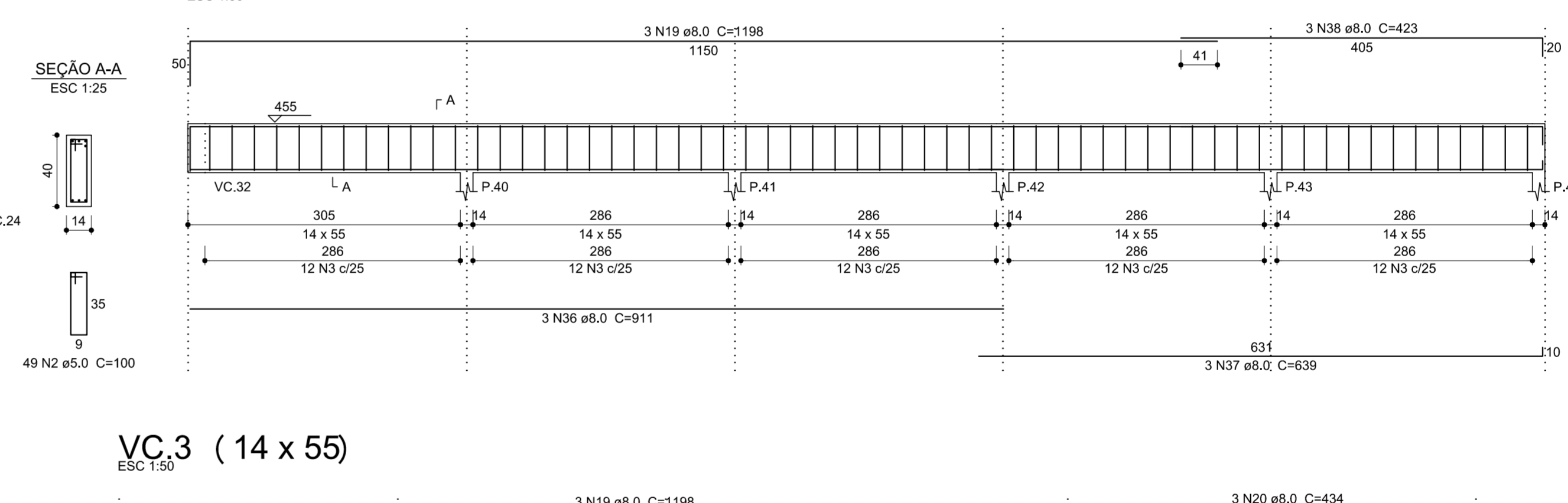
VC.13 (14 x 40)



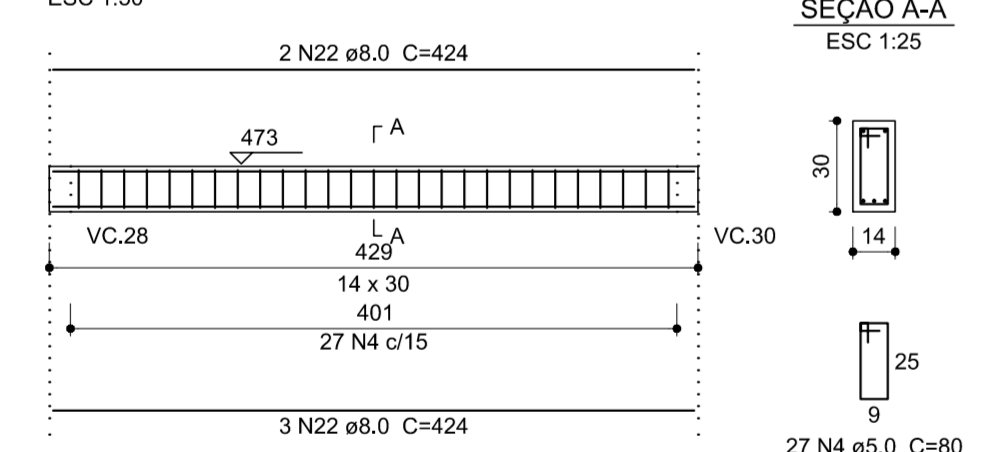
VC.14 (14 x 40)



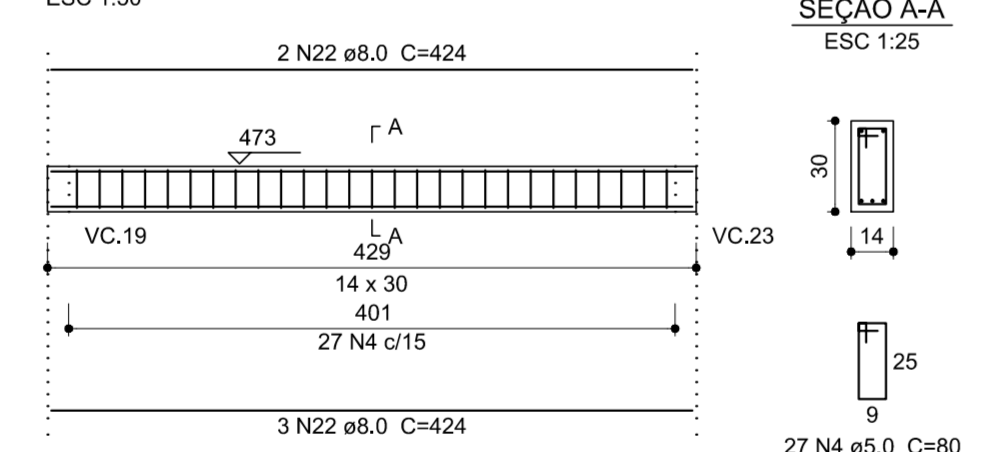
VC.15 (14 x 55)



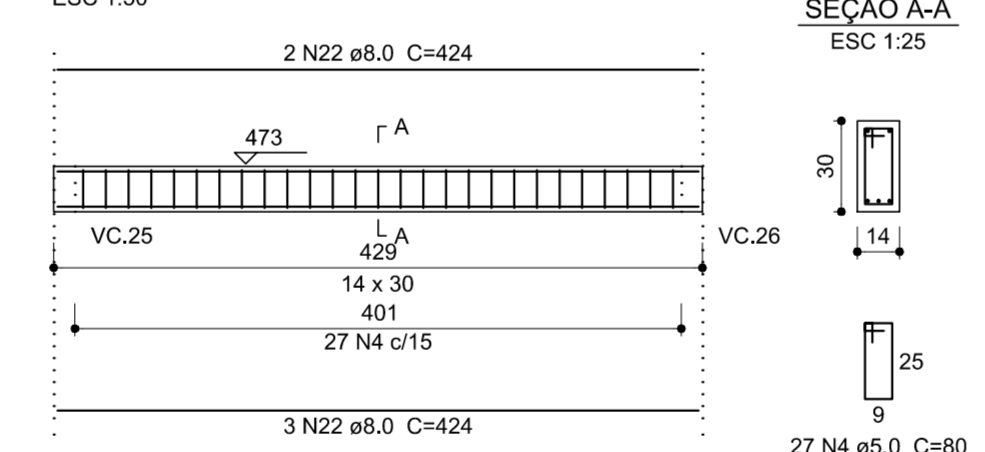
VC.7 (14 x 30)



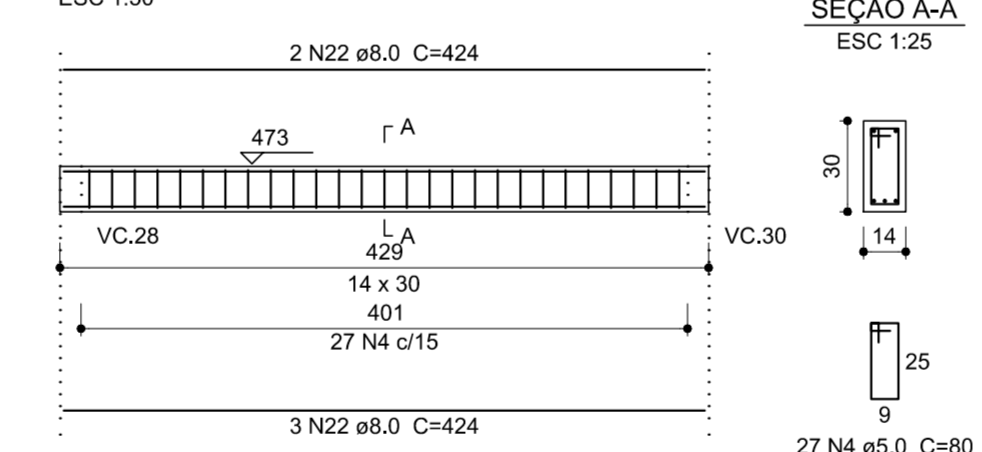
VC.8 (14 x 30)



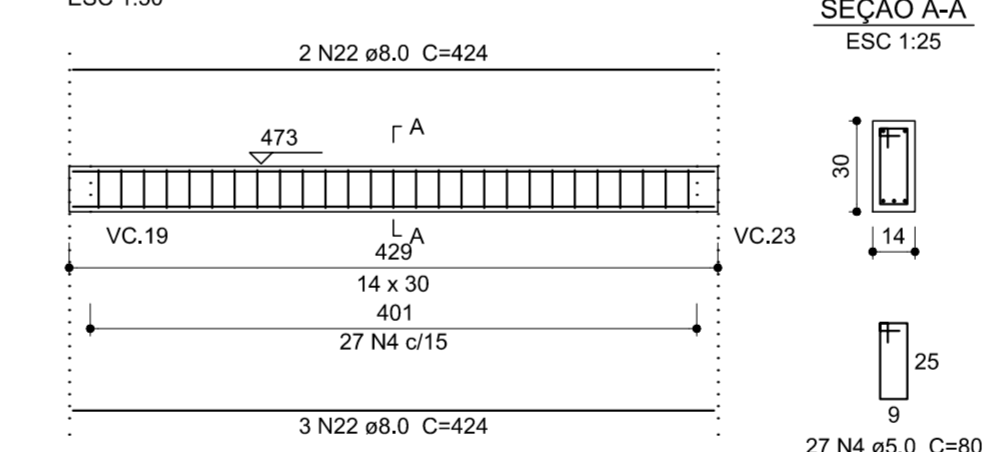
VC.9 (14 x 30)



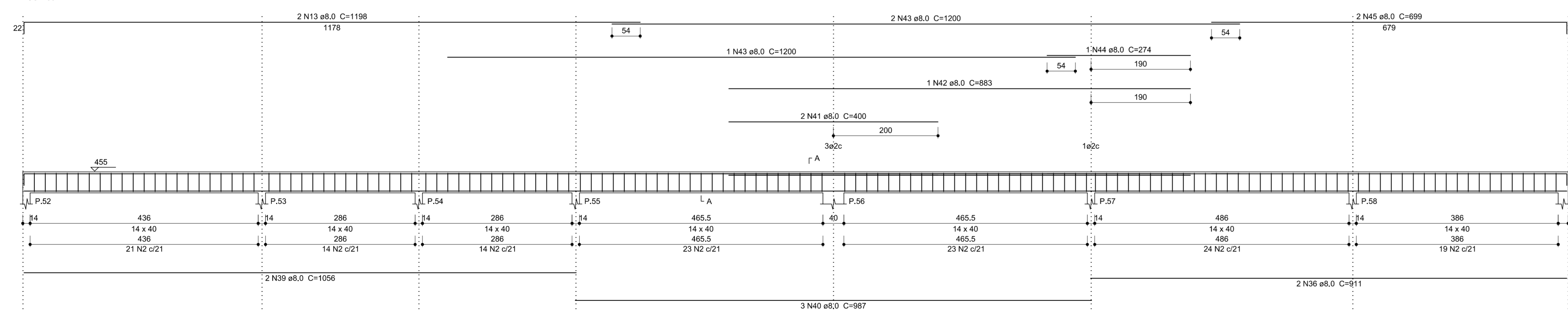
VC.10 (14 x 30)



VC.11 (14 x 30)



VC.16 (14 x 40)



Relação do aço

VC.1	VC.2	VC.3	VC.4	VC.5	VC.6	VC.7	VC.8	VC.9	VC.10	VC.11	VC.13	VC.14	VC.15
AÇO	N	DIAM (mm)	QUANT (Barras)	UNIT (cm)	C.TOTAL (cm)								
CA60	1	5,0	62	120	7440								
	2	5,0	599	100	59900								
	3	5,0	120	130	15600								
	4	5,0	80	100	8000								
CA50	5	6,0	2	395	790								
	6	6,0	2	667	1334								
	7	6,0	4	1027	4108								
	8	6,0	4	846	3384								
	9	6,0	2	411	822								
	10	6,0	4	1961	4044								
	11	6,0	3	456	1368								
	12	6,0	1	300	300								
	13	6,0	4	1166	4792								
	14	6,0	2	407	814								
	15	6,0	1	614	614								
	16	6,0	1	170	170								
	17	6,0	1	200	200								
	18	6,0	1	420	420								
	19	6,0	6	1198	7188								
	20	6,0	3	434	1302								
	21	6,0	2	909	1818								
	22	8,0	30	424	12720								
	23	6,0	4	991	3964								
	24	6,0	2	502	1004								
	25	6,0	2	146	296								
	26	6,0	2	300	700								
	27	6,0	1	175	175								
	28	6,0	2	497	994								
	29	6,0	1	667	667								
	30	6,0	2	1102	2204								
	31	6,0	2	196	396								
	32	6,0	2	148	296								
	33	6,0	2	1059	2118								
	34	6,0	2	190	380								
	35	6,0	2	1112	2224								
	36	6,0	5	915	4555								
	37	6,0	3	639	1917								
	38	6,0	3	423	1269								
	39	6,0	2	1056	2112								
	40	6,0	3	987	2961								
	41	6,0	2	400	800								
	42	6,0	1	883	883								
	43	6,0	3	1200	3600								
	44	6,0	1	274	274								
	45	6,0	2	699	1398								
	46	10,0	3	456	1374								
	47	10,0	6	423	2538								
	48	10,0	3	570	1710								
	49	10,0	4	909	3636								
	50	12,5	2	1197	2394								
	51	12,5	4	1200	4800								
	52	12,5	2	736	1476								
	53	12,5	3	661	1983								
	54	12,5	1	436	436								
	55	12,5	1	400	400								
	56	12,5	2	1197	2394								
	57	12,5	2	783	1566								
	58	16,0	2	390	780								

Resumo do aço

AÇO	DIAM (mm)	C.TOTAL (cm)	PESO + 10% (kg)
CA50	6,0	815,8	354,1
	10,0	32,6	62,8
	12,5	154,5	163,7
	16,0	7,8	13,5
CA60	5,0	849	105,9

PESO TOTAL (kg)
 CA50 994,1
 CA60 186,3
 CA50 994,1
 CA60 186,3

Volume de concreto (C-30 = 11,63 m³)
 Área de forma = 193,94 m²

CLIENTE: IFC CAMPUS ARAQUARI
 LOCAL: BR 280 KM 27
 BAIRRO: --- CIDADE: ARAQUARI - SC

DETALHAMENTO DAS VIGAS DO PAVIMENTO COBERTURA 1/2

PROJETO ESTRUTURAL

RESENHO: Cirilo Junior
 ESCALA: Indicadas
 DATA: 14/09/2013
 DATA ÚLT. MODIF: 08/10/2013

FORMA: 09
 CREA: 094274-D-0
 CIRILO DE ALEXANDRA ALMEIDA JR.
 Engenheiro Civil - CREA 094274-D-0